



Suggested Retail Price

Tax is 4.712% excise tax and 3% harbor fee

Early Bird Whale Watch® & Breakfast

▪ Adult:	\$49.14	+	\$3.86 tax	=	\$53.00	With Waikiki Trans:	+	\$15.00	=	\$68.00
▪ Child:	\$30.60	+	\$2.40 tax	=	\$33.00	With Waikiki Trans:	+	\$15.00	=	\$48.00

Early Bird Whale Watch®

▪ Adult:	\$37.09	+	\$2.91 tax	=	\$40.00	With Waikiki Trans:	+	\$15.00	=	\$55.00
▪ Child:	\$22.25	+	\$1.75 tax	=	\$24.00	With Waikiki Trans:	+	\$15.00	=	\$39.00

Cruise Description

Start your day with whales aboard the Star of Honolulu®! Four walk-around decks and three types of stabilizers offer the most comfortable setting, plus narration and **Whale Guarantee!** Our **certified Naturalist crew** will share their knowledge and make your whale watch more memorable. Tasty Hot Breakfast Buffet option features scrambled eggs to cereal and milk. All aboard Hawaii's largest, award-winning Star of Honolulu®

Menu & Beverage

The Breakfast Package includes our tasty **Hot Breakfast Buffet** featuring **Hot Items** of Scrambled Eggs, Link Sausage and Steamed White Rice*, **Assorted Fresh Fruits** of Fresh Maui Gold® Pineapple*, Sunkist® Oranges*, **Bakery Basket** of Blueberry Muffins and *Poi* Rolls by Elvin's Bakery® with Sweet Butter and Jam, **Cereal and Milk** and **Beverage Station** of Freshly Brewed **STAR's Custom Kona Blend Coffee** by Hawaiian Paradise Coffee®, Tea and Orange Juice. Vegan Selections are marked *. Additional beverages available for purchase.

Early Bird Whale Watch® Activities

- **Whale Guarantee:** Receive a free return Whale Check until a whale is sighted (meal and transportation optional).
- **Certified Naturalist crew:** Not only is our team knowledgeable, but also personable and enthusiastic to enhance your whale experience.
- **Whale activities:** Observe whales from the STAR's 60' high observation deck, plus Captain's briefing, Naturalist demonstration, narration, handout, hands-on display and more!
- **"Child FREE" Special:** 1 child (age 3-11), cruise only FREE per paid adult. For child to add breakfast is \$9.00; for breakfast **and** transportation, \$24.00.

General Information

- Round-trip Transportation (price is per person): From Waikiki \$15.00. Additional usage fee applies for some hotels.
- Accessible Accommodations (for transportation and vessel): Available upon request with 24 hours advance notice.
- Cruise Time: **8:45 – 10:45AM; January 2, 2019 – April 5, 2019.**
- Location / Check-In: Departs from Aloha Tower Marketplace, Pier 8. For those arriving via own transportation, please check in 45 minutes prior to departure at our Reservations Office, next to the Star of Honolulu®.
- Vessel Info: The custom-built 232' **Star of Honolulu®** is Hawaii's largest, award-winning 1,500-person tour vessel with **3 types of stabilizers** for smooth sailing in Hawaiian waters; **Hawaii's only A.D.A. compliant ship** with 2 elevators, plus 4 spacious decks for the best views and most choices to suit your needs. Other features include **6 beautiful dining rooms and private lounges**, sound systems, bars and restrooms on all decks and a **60' high observation sun deck**.
- Route: The Star of Honolulu® is stabilized and **certificated to go beyond Diamond Head** to view the beautiful Kahala Gold Coast. The Captain may alter the route or cancel the cruise depending on weather conditions.
- Dress Code: Casual.
- Reservations & Cancellation Policy: For reservations and information, call Star of Honolulu Cruises & Events® toll free at 1-800-334-6191, (808) 983-STAR (7827) in Hawaii or visit our website at StarofHonolulu.com. You may also fax to (808) 983-7780 or email info@starofhonolulu.com. Price and contents subject to change. Cancellations made less than 24 hours in advance and no shows will be charged the full amount. For parties of 10 or more, please inquire for group policy.



Early Bird Whale Watch™

- 8:00AM Boarding at Aloha Tower Marketplace
- 8:45AM Departure; Captain and Naturalist Briefing; Whale Watching
- 10:45AM Return / Disembark

Exotic cocktails, beer, wine, soft drinks and juice are available for purchase.

Hot Breakfast Buffet

Our tasty hot breakfast including *Fresh Tropical Fruit* and freshly brewed *STAR's Custom Kona Blend Coffee* will get you ready for Winter's "must do" eco-tour!



Hot Items

- Scrambled Eggs
- Link Sausage
- Steamed White Rice*

Assorted Fresh Fruits

- Fresh Maui Gold® Pineapples*
- Sunkist® Oranges*
- Fresh Fruit of the Season*



Bakery Basket

Blueberry Muffins and *Poi* Rolls by Elvin's Bakery® with Sweet Butter and Jam



Cereal and Milk

Beverage Station

Freshly Brewed **STAR's Custom Kona Blend Coffee** by Hawaiian Paradise Coffee®, Tea and Orange Juice

—•• Vegan Selections are marked * —••

Enjoy "Whales Your Way" Aboard the Star of Honolulu®



Captain's Briefing



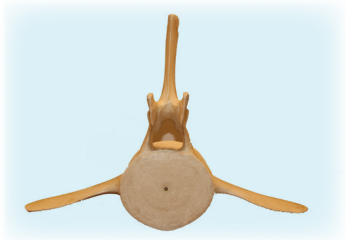
Trained Naturalist Crew



Whale Gallery



Best Seat at Sea



Hands-On Educational Displays



Whale Breach Taken from the STAR

