



EVENT: Waikiki Arrival Station

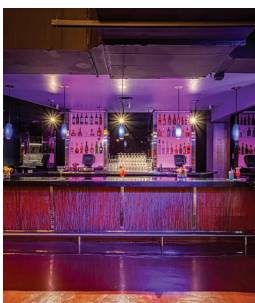


Briefing at the Center of Waikiki

Group of 1,000 or more persons;

Off-hour, whole place for over 1,000 persons 8:00AM - 3:00PM

Suggested retail price \$20.00 per person



INCLUSIONS

- **Exclusive Use of Whole Place:** 750-seat Royal Hawaiian Theater®, Gallery Memorabilia and Gallery Old Hawaii, VIP Lounge, Green Room®, and Outside Terrace Cabanas (excludes dressing rooms).
- **Use of Stage:** In front of black curtain, lights, sound, microphone, and podium. Perfect for briefings as each group arrives at a different time.

FACILITIES

TYPE	MIN - MAX CAPACITY	NOTES
Whole Place	1,000 or more	<ul style="list-style-type: none"> • 1,000 persons may come in at different times for their briefings and then may leave the facility. 1,000 persons may <u>NOT</u> be in the theater at one time (maximum 750 persons).

SAMPLE SCHEDULE

8:30AM	<ul style="list-style-type: none"> • Door opens. Guests are brought from the airport. Go through theater for briefing.
	<ul style="list-style-type: none"> • Green Room® can be reserved for VIP guests.
3:00PM	<ul style="list-style-type: none"> • Door closes.

CUSTOM ENHANCEMENTS

- **Exclusive Round-Trip Transportation (price per person):** From Airport \$20.50, Waikiki \$20.00; From Ko Olina / Kahala \$39.00.
- **Fresh Flower Lei Greeting:** \$19.00 per person (minimum of 20 persons). A Hawaiian tradition! Fresh flower lei greeting by our lovely hula dancer.
- **No-Host Bar:** Can be arranged at a minimum cost.

ADDITIONAL NOTES

- **Confirmation / Payment / Cancellation Terms:** Events require **non-refundable deposits** based on total charge: 10% upon confirmation, 40% deposit 30 days prior and balance of 50% 72 hours prior. Price and contents subject to change.
- **Force Majeure and Others:** See Event contract.





FACILITY PROFILE / OVERVIEW

Waikiki's only premier theater with 750 seats

- **Location:** Royal Hawaiian Center, Bldg. B, 4th Floor
- **Capacity:** 750 Persons
- **Space:** Interior 21,273 sq. ft.; Exterior 10,093 sq. ft.
- **Theater / Stage Use:** Ask for facility tech specs.
- **Loading:** Permission needed from Royal Hawaiian Center. Freight Elevator 5'W x 8'H x 7'L.

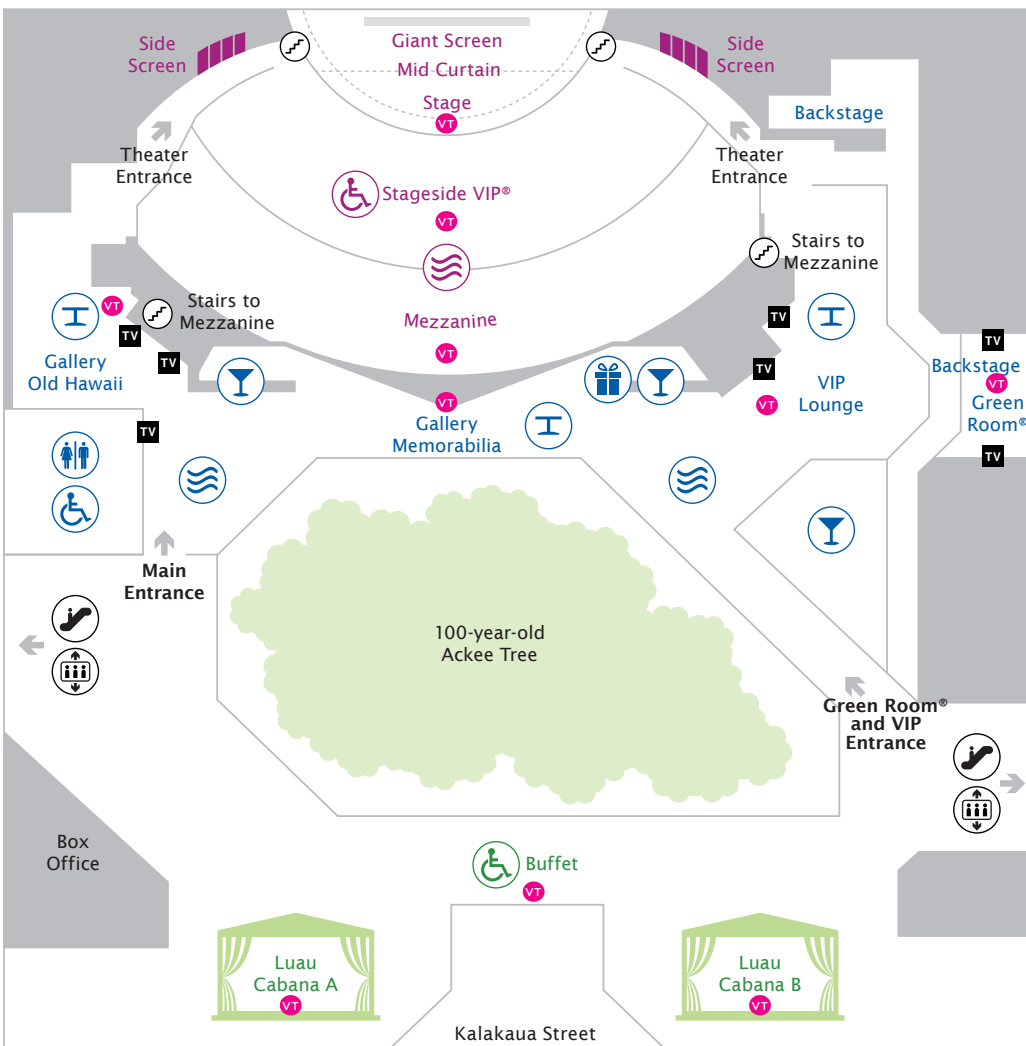
Note: Capacity below might change depending on product category.

SYMBOL KEY

- Cocktail Area
- Restroom
- Elevator
- Stairs
- Bar
- ADA Accessible
- Escalator
- No Public Access
- Gift Shop
- Air Conditioning
- Flat Screen TV



Virtual Tour: RockAHulaHawaii.com/virtualtour
See below for location.



<p>THEATER: 750 capacity</p> <p>Stage (W x H) Giant Screen: 40' x 29' Stage: 56' x 20' Mid Curtain: 55'6" x 19'9" 2 Side Screens: 22' x 21' (split to 4 each)</p> <p>Stageside VIP® Table: 230 seats Banquet chairs: 300 seats</p> <p>Mezzanine Theater style: 487 seats</p>
<p>INTERIOR SPACE</p> <p>Green Room® Cocktail: 50 persons</p> <p>VIP Lounge Cocktail: 150 persons Table: 110 seats</p> <p>Gallery Memorabilia Cocktail: 75 persons Table: 50 seats</p> <p>Gallery Old Hawaii Cocktail: 75 persons Table: 50 seats</p>
<p>OUTSIDE TERRACE</p> <p>Luau Cabana: A & B Cocktail: 250 persons each Table: 200 seats each</p>



Theater



Stageside VIP®



Green Room®



Luau Cabana

